

# Modular Changing Places Toilets

## Project Example

### 1. Background

An English Town Council wanted to install a Changing Places Toilet as there were no appropriate toilet facilities for people with complex needs in the town. They worked with community groups to develop the plan, deciding on a central location next to the council buildings as the ideal space. As there was no room in existing buildings, a modular building was the ideal solution.



### 2. Installation

The modular Changing Places Building was manufactured off-site to the council's requirements, adhering to Changing Places specifications. The site was prepared for delivery, and the building was craned in. Post-delivery, the power, water and other services were connected, and all elements were site-tested and commissioned so that the building was ready to be used.

### 3. Equipment

- ✓ Astor OT200 full room covering Ceiling Hoist
- ✓ Astor Invincible Height Adjustable Changing Table
- ✓ Astor ABW-CP height adjustable Wash Basin
- ✓ Toilet
- ✓ Privacy Screen
- ✓ Accessories

### 4. Completion



### Why modular?

*"A perfect solution if you do not have the space or time to convert an existing room."*

- ✓ No building works required
- ✓ All equipment pre-fitted - one stop solution
- ✓ Speedy turnaround and installation
- ✓ External can be designed to fit with your venue
- ✓ Reduces planning permission issues



### Why are Changing Places Toilets needed?

**83%** of people with a disability avoid

**1 in 5** people have a disability

**£12.1 Billion** spent per year on tourism by people with health conditions

**Contact us** for more details

Tel: 01249 822063

Email: [sales@healthmatic.com](mailto:sales@healthmatic.com)

# Modular Changing Places Toilets

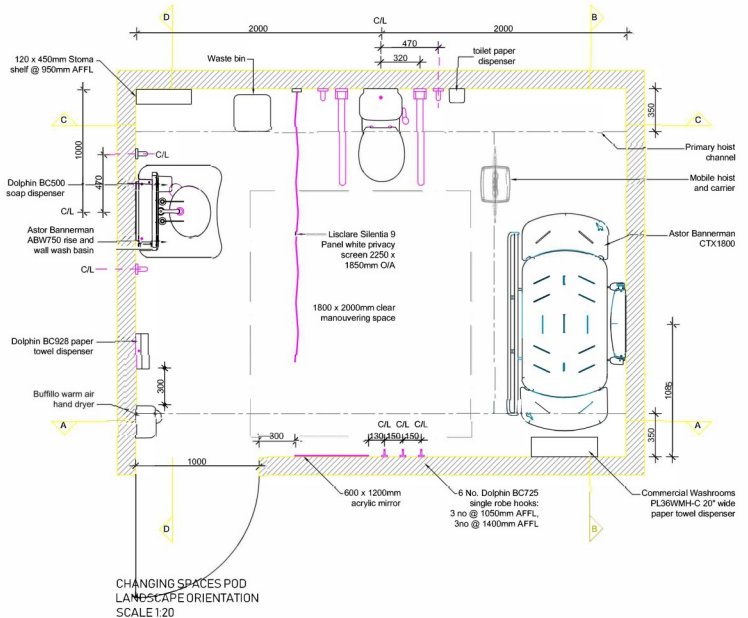


## Specification:

Our Modular Changing Places Toilets come ready fitted with all specified equipment, designed for use in a public usage facility, supplied by Astor Bannerman..

The modular solution can be tailored to suit your environment and budget, but all conform with the 12 square metres specification requirement.

They are compliant to BS8300-2-2018 standards, and all equipment installed is specification compliant and has passed through rigorous testing.



*"With a wide range of interiors, cladding and roofing options, it is possible to install a modular building for relatively modest cost."*

**Turnkey Solution:** Full turnkey solution from design to installation.

**Complication Free Installation:** They are quick and easy to install, with none of the mess and inconvenience involved with weeks of building works.

**Equipment pre-fitted:** Arrives complete, ready fitted with all the equipment required to meet Changing Places and BS8300-2:2018 standards, with a compliant layout and design.

**Design Options:** Our Modular Changing Places Toilets can be designed to fit with your environment, with a range of cladding and roofing options to suit budget and design preferences.

**Visible - Higher Usage:** Standalone facilities are highly visible. As a result, they get used more and help to attract new customers.

## Premium products designed for public Changing Places:

Including robust, hygienic Astor Invincible Changing Table and Astor ABW-CP - height adjustable basin, mirror and soap dispenser, designed and manufactured by Astor Bannerman in the UK.

**Rigorously tested:** Installed equipment has been rigorously tested for complete peace of mind.

**Experienced Team:** We are experts in the provision of public toilets, and design and install new amenity buildings for the majority of Local Authorities, tourism departments, environmental groups and transport hubs. We partner with Astor Bannerman, a leading Changing Places Toilet design, manufacturer and installer, who supply and fit high quality equipment specifically designed for Changing Places Toilets.

Contact us for more details  
Tel: 01249 822063  
Email: [sales@healthmatic.com](mailto:sales@healthmatic.com)